



AMC XP1000se

HEADPHONES AMP SERIES
耳擴系列

STEREO PREAMPLIFIER

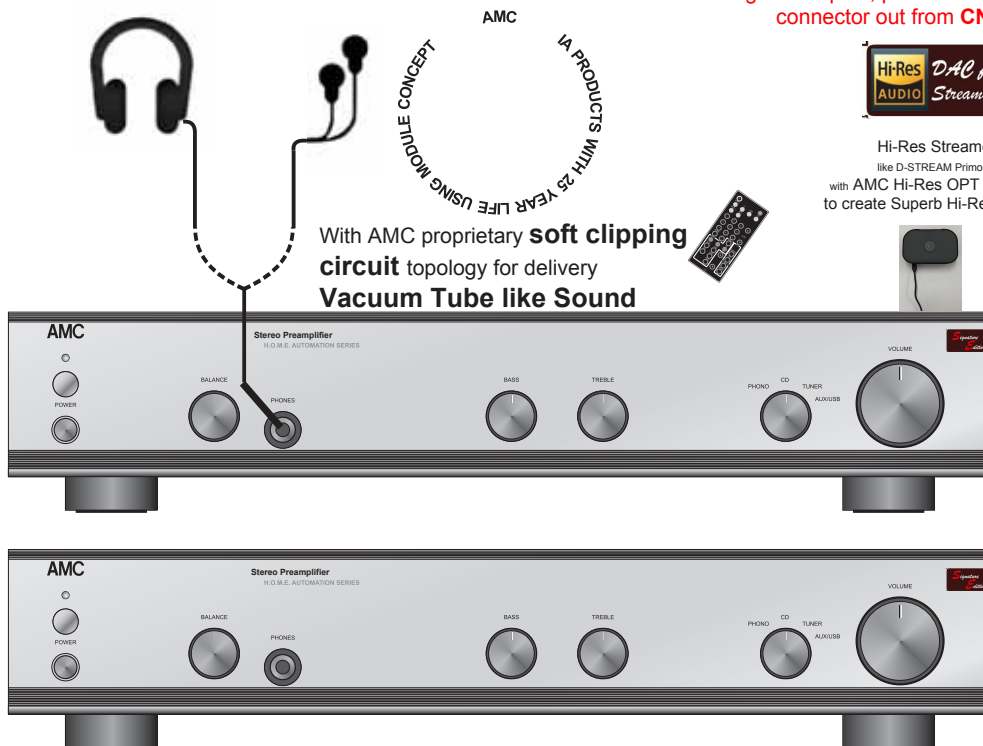


Special **Headphone Amp**
Design for all Headphones and
earphones available in the market up to
600 ohms impedance.

Use OPT input only
for using AUX inputs, please take OPT output
connector out from **CN201**



Hi-Res Streamer
like D-STREAM Primo-HD
with AMC Hi-Res OPT DAC
to create Superb Hi-Res Music



INSTRUCTIONS FOR INSTALLATION AND OPERATION



CAUTION: TO REDUCE THE RISK OF ELECTRIC SHOCK, DO NOT REMOVE COVER (OR BACK). NO USER-SERVICEABLE PARTS INSIDE. REFER SERVICING TO QUALIFIED SERVICE PERSONNEL



AFIN D'EVITER UN CHOC ELECTRIQUE ET LES CONSEQUENCES GRAVES QUI POURRAIENT EN RESULTER, TENTEZ PAS D'OUVRIR L'APPAREIL ET DE TOUCHER AUX COMPOSANTS INTERNES SANS LA PRESENCE D'UNE PERSONNE QUALIFIEE.



PARA REDUCIR EL RIESGO DE SACUDIDAS ELECTRICAS, NO DEBERA QUITARSE LA TAPA (NI PARTE POSTERIOR). CONSULTESE AL PERSONAL CAPACITADO PARA LAS REPARACIONES INTERNAS.

WARNING: TO PREVENT FIRE OR ELECTRIC SHOCK, DO NOT EXPOSE THIS APPLIANCE TO RAIN OR MOISTURE.

ADVERTENCIA: PARA EVITAR EL RIESGO DE INCENDIO O SACUDIDA ELECTRICA, NO DEBERA EXPONERSE ESTE APARATO A LA LLUVIA O HUMEDAD.

CAUTION: TO PREVENT ELECTRIC SHOCK DO NOT USE THIS (POLARISED) PLUG WITH AN EXTENSION CORD, RECEPTACLE OR OTHER OUTLET UNLESS THE BLADES CAN BE FULLY INSERTED TO PREVENT BLADE EXPOSURE..

ATTENTION: POUR PREVENIR LES CHOCES ELECTRIQUES NE PAS UTILISER CETTE FICHE POLARISEE AVEC UN PROLONGATEUR. UNE PRISE DE COURANT OU UNE AUTRE SORTIE DE COURANT, SAUF SI LES LAMES PEUVENT ETRE INSEREES A FOND SANS EN LAISSER AUCUNE PARTIE FOND SANS EN LAISSER AUCUNE PARTIE A DECOUVERT.

PRECAUCION: PARA EVITAR SACUDIDAS ELECTRICAS, NO DEBERA UTILIZARSE ESTA CLAVIJA POLARIZADA CON UN CORDON DE PROLONGACION, RECEPTACULO U OTRO TIPO DE SALIDA A MENOS QUE SE HAYAN INSERTADO COMPLETAMENTE LAS LENGÜETAS PARA EVITAR SU EXPOSICION.

NOTE: Some AMC products are equipped with dual or multi-voltage transformers (which is indicated on the back panel). If you wish to change the voltage, please bring your unit to an authorised AMC service technician for internal conversion.

ATTENTION: Quelques pièces AMC sont munies de transformateurs à double ou à multi-voltage (indiqué au panneau arrière). Si vous voulez changer le voltage, veuillez apporter votre appareil au fournisseur de AMC pour le transformer.

ZUR BEACHTUNG: Einige AMC Geräte sind mit Umschaltern für unterschiedliche Netzspannungen ausgerüstet (Ein Vermerk auf der Rückseite weist darauf hin).

Die Anpassung, wenn notwendig, muß von einem qualifizierten Techniker in einer AMC Servicestation vorgenommen werden.

NOTA: Ciertos componentes de AMC están dotados de transformadores de doble tensión o de varias tensiones (lo que se indica en el panel posterior). Si se desea cambiar la tensión, sírvanse llevar el aparato a un técnico autorizado por AMC para su conversión interna.

NOTE TO CATV systems installer: This reminder is provided to call the CATV system installer's attention to Article 820-22 of the NEC that provides guidelines for proper grounding and, in particular, specifies that the cable ground shall be connected to the grounding system of the building, as close to the point of cable entry as practical.

NOTA PARA EL INSTALADOR DE ANTENAS DE TELEVISION COLECTIVAS: La presente advertencia se provee para llamar la atención del instalador al Artículo 820-22 de NEC (Código Eléctrico Nacional) donde se facilitan las directrices para la pertinente puesta a tierra y que especifica en particular que el conductor a tierra del cable debe conectarse al sistema de conexión a tierra del edificio, lo más próximo posible al punto de entrada del cable.



The lightning flash with arrowhead, within an equilateral triangle, is intended to alert the user of the presence of "uninsulated" dangerous voltage" within the product's enclosure; that may be of sufficient magnitude to constitute a risk of electric shock to persons.



The exclamation point within an equilateral triangle is intended to alert the user of the presence of important operating and maintenance (servicing) instructions in the literature accompanying the appliance.

INTRODUCTION

The AMC remote controllable preamplifier XP1000se offers in an innovative and elegant design, an affordable combination of high quality sound reproduction and comprehensive facilities.

The preamplifier accepts four inputs (Phono, CD, Tuner and Aux/USB), is compatible with both moving magnet and moving coil cartridges.

To get the best from your amplifier please study this manual carefully. Should you experience any problems, please discuss them with your dealer who has a full knowledge of AMC products and their use in a variety of systems.

INSTALLATION

Your AMC amplifier is supplied set to work on your local mains supply voltage.

Check that your local mains supply voltage agrees with the voltage setting indicated on the back panel of the amplifier. If not, please set the AC Select Switch on back panel to your local mains supply voltage.

Note: All connection must be completed and AC Select Switch should be set to correct voltage before plugging in power cord and turning the power on.

FUSES

Your AMC amplifier contains fuses which are designed to protect the amplifier and prevent the occurrence of a dangerous fault condition. These should only be inspected and replaced by a competent engineer using the correct replacement types.

FEATURE

*Unique phono stage design that employs two audiophile grade op-amps per channel that provide very low THD, TIM and noise, together with switchable MM/MC sensitivities.

*AMC XP1000se is designed with option of USB connector for networking to other equipments, computer, LAN and so the Internet.

*AMC XP1000se creates CD quality sound from computer and Internet through the USB linking system designed in AMC IA system.

*Special designed passive tone control circuit to give natural sound quality.

*Uses audiophile grade components throughout, providing exceptional accuracy to phono and tone control responses.

*High overload margin on tone control circuit by virtue of its topologies.

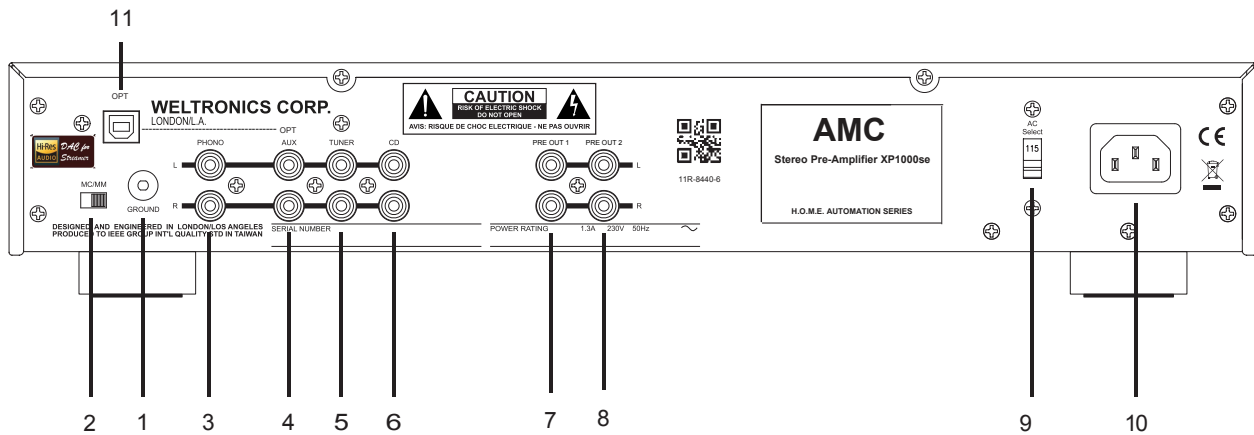
*With universal power transformer passed all international safety standards, end users can use the unit in all countries by re-setting the AC select to correct voltage.

*Heavy duty speaker binding posts and phono connectors for ultra reliable connections.


REAR PANEL CONNECTIONS

REAR PANEL

Model # XP1000se on Rear Panel

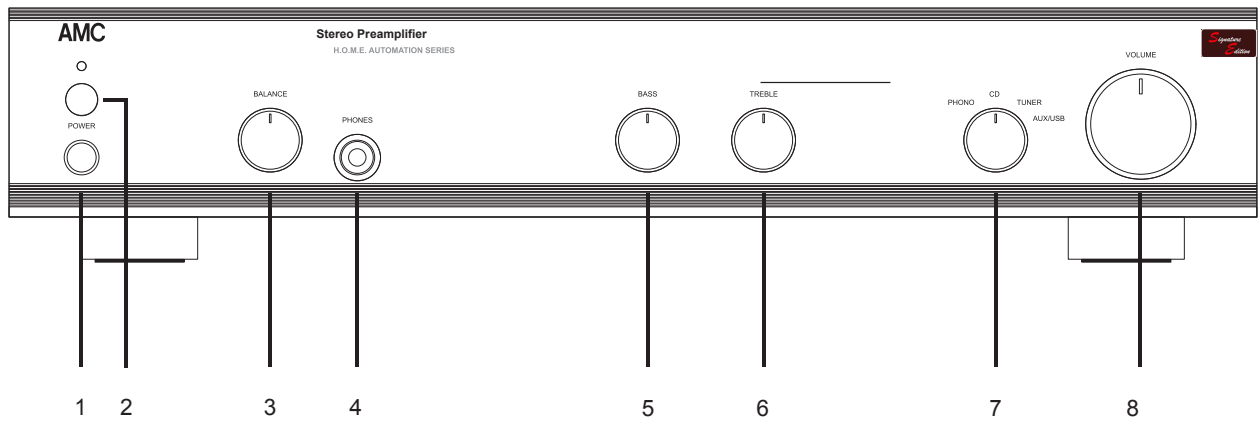


1. PHONO GROUND TERMINAL
2. PHONO MM/MC INPUT SELECTION SWITCH
3. PHONO INPUT
4. OPT/ USB/ AUX INPUT
Use OPT or USB input only. for using AUX inputs, please take OPT or USB output connector out from CN201
5. TUNER INPUT
6. CD INPUT

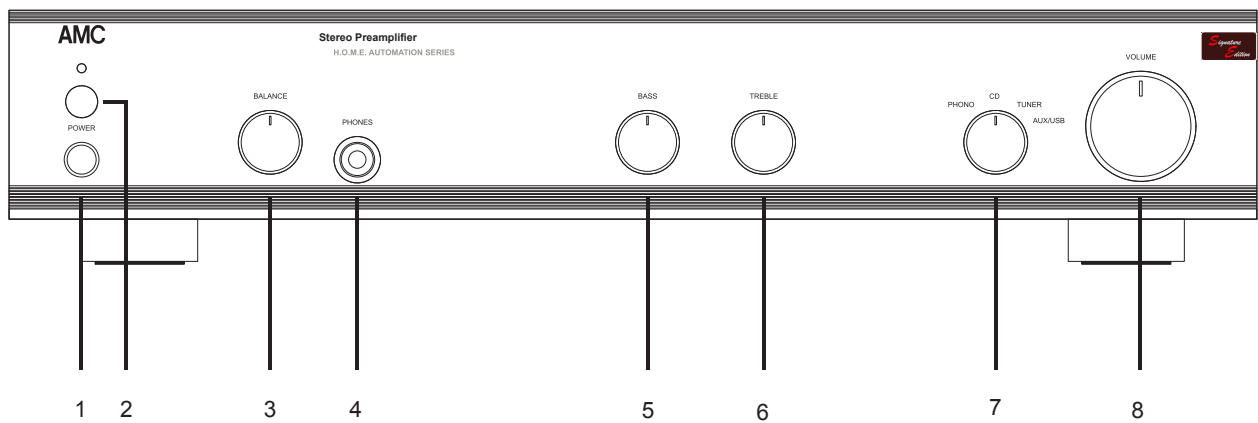
7. PRE OUT 1
8. PRE OUT 2
9. AC SELECT SWITCH
10. AC RECEPTACLE
11. OPT or USB 
Use OPT input only. for using AUX inputs, please take OPT or USB output connector out from CN201

FRONT PANEL CONTROLS

FRONT PANEL



Model # XP1000se on Rear Panel



- 1. POWER SWITCH
- 2. INFRARED RECEIVER
- 3. BALANCE CONTROL
- 4. PHONES

- 5. BASS CONTROL
- 6. TREBLE CONTROL
- 7. INPUT SELECTION SWITCH
- 8. VOLUME CONTROL

REAR PANEL CONNECTIONS

INPUTS

All audio Inputs are via RCA type RCA connectors. All the RCA sockets on your AMC amplifier are marked "L" for left and "R" for right channels, with the left channels nearer the top of the cabinet. Your connection leads will have a white or black plug for left, and a red plug for right.

1. PHONO GROUND TERMINAL

The Ground Terminal is for you to connect ground wire of your turntable in order to eliminate possible interference and hum loop for best possible sound quality.

2. PHONO MM/MC INPUT SELECTION SWITCH

3. PHONO INPUT (OPTION COAXIAL IN)

This input is suitable for both moving magnet and moving coil cartridges. For either type of cartridge the plugs on your turntable lead should be connected to the phono input sockets on the rear panel of your amplifier.

A switch adjacent to the RCA input sockets allows the selection of either MM or MC input. Facing the back of the amplifier, move the switch to the right for use with MM or high output MC cartridges and to the left for use with MC cartridges.

Note: Never operate the MM/MC selector switch with the volume control turned up as the resultant electrical surge may damage your loudspeakers.

To minimize hum the turntable lead should be kept away from the mains wiring, and any separate turntable ground lead should be attached firmly to the earth terminal on the rear of the amplifier.

4. OPT/ USB / AUXILIARY INPUT

The OPT /USB /Auxiliary input is designed for using with Optical (OPT) or USB input located at Top Left corner of rear panel for Hi-Res Streamers like D-STREAM PRIMO-HD etc or and other optical sources or for any extra source processing a line level output, perhaps a second tuner or CD player, or an additional tape or video recorder wired for replay only.

Use OPT input only. for using AUX inputs, please take OPT or USB output connector out from CN201

5. TUNER INPUT

The Tuner input is suitable for use with most AM/ FM tuners. Connect your tuner to the amplifier using the RCA sockets marked "Tuner".

6. CD INPUT

The CD input is suitable for use with any CD player. Connect your CD player to the amplifier using the RCA sockets marked "CD".

7. PRE OUT 1

There are two pre-outs, PRE-OUT 1 & PRE-OUT 2 for the convenience to have the pre-amp outputs to be connected to more others equipments.

The two pre-outs are connected in parallel together.

8. PRE OUT 2

When you will like to connect the STEREO PREAMPLIFIER of XP1000se to more equipments like hooking to more Power Amps or subwoofers, you can use the two pre-amp outputs for the purposes.

It is very important that there is adequate ventilation for the whole of the pre-amplifier. Do not place the unit on a rug or other soft surface that it could sink into, obstructing the air inlets on its underside.

9. AC Selector (115V or 230V)

The AC Selector will be set to the AC power voltage of your country from factory. But in case if your XP1000se is not received directly from factory or you move from one country to the other, the AC selector might be set at different voltage. So, before plug power cord into your wall AC outlet, please always check if the Voltage selector set to the voltage of the country you will use the XP1000se or not and set to correct voltage. When the AC Selector is set to 115VAC, the XP1000se can be used in countries with AC Power Voltage between 110V and 120V. When the AC Selector is set to 230V, the XP1000se can be used in countries with AC Power Voltage between 220V and 240V.

10. AC RECEPTACLE

The AC RECEPTACLE is for you to plug in with power cord attached in the packing or you can plug in with other power cord with your preferences.

11. OPT or USB CONNECTOR

The Hi-Res OPT 24Bit/192KHz DAC input connector is AMC proprietary Designed for Hi-Res Streamers like D-STREAM PRIMO-HD etc or and other Optical sources to create superb music sound quality with isolated ground to prevent unexpected ground loop problems .

Use OPT or USB input only. for using AUX inputs, please take OPT output connector out from CN201

FRONT PANEL CONTROLS

1. POWER SWITCH

The preamplifier is turned on by depressing the power switch. The small indicator above the switch will glow blue. Before switching on, always set the volume control to minimum to avoid damage to your loudspeakers.

Note: Your AMC preamplifier will play music almost immediately after being switched on. However, in common with other audiophile products, the internal circuits take some time to stabilize fully, and the best possible sound quality may not be obtained until the amplifier has had some time (possibly an hour or two) to warm up.

2. INFRARED RECEIVER

The infrared receiver for receiving the infra-red signals from your remote handset.

3. BALANCE CONTROL

The Balance Control adjusts the relative levels of the left and right channels. A detent at the 12 o'clock position marks the point of equal balance. Rotation of the Balance Control to the right (clockwise) decreases the level of the left channel so that only the right channel is heard. Rotation to the left shifts the sonic image toward the left speaker.

Adjust the Balance Control to produce a natural spread of sound across the space between the speakers, with any monophonic sound (such as a radio announcer's voice appearing as a phantom image centered midway between them. Recordings often contain small errors in channel balance, typically no more than 2dB; but this is enough to degrade stereo imaging. Small compensating changes in the setting of the Balance Control can significantly improve the depth and stability of the stereo image.

4. PHONES

The headphone socket will accept any headphones fitted with a standard 1/4"(6.35mm) stereo jack plug. When Headphones are in use, the output to your loudspeakers will be cut and all the amplifier's functions will operate as normal.

Special **Headphone Amp** Design for all Headphones and earphones available in the market up to 600 ohms impedance.

With AMC proprietary soft clipping circuit topology for delivery **Vacuum Tube like Sound**.

5. BASS CONTROL

The Bass Control adjusts the relative level of the low frequencies in the sound. The electrical response of the amplifier is flattest when the control is set in the detent or 12 o'clock position. Rotation of the knob to the right (clockwise) increases the level of low frequency sounds, and rotation counter-clockwise decreases their level. Adjust the Bass Control to achieve the tonal balance that sounds most natural to you.

6. TREBLE CONTROL

The Treble Control adjusts the relative level of the high frequencies in the sound. The response of the amplifier is flattest when the control is set in the detent or 12 o'clock position. Rotation of the Treble Control to the right (clockwise) increases the level of high frequency sounds, and rotation counter-clockwise decreases their level. Adjust Treble Control to achieve the tonal balance sounds most natural to you.

7. INPUT SELECTION SWITCH The rotary input selector switch selects which input signal(Phono, CD, Tuner or Aux/USB)is fed to the power amplifier. The selected signal is also fed to the "Tape out" sockets for recording.

8. VOLUME CONTROL

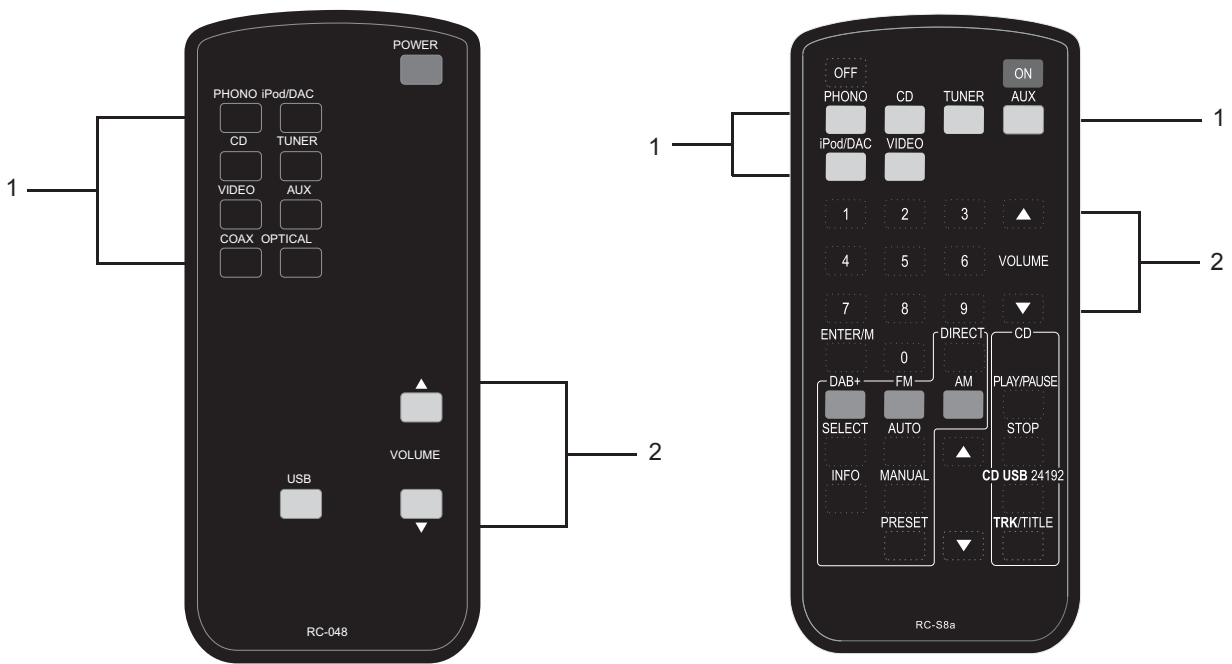
The volume control adjusts the overall loudness level of the sound. The Volume control is designed for accurate tracking of its two channels, so that the stereo balance will not shift noticeably as the loudness of the sound is varied.

AMC Amps Remote Code List

Customer Code: 07FC

Function	Hex	D0	D1	D2	D3	D4	D5	D6	D7	Type	Product(s)
Tuner	C0	0	0	0	0	0	0	1	1	Input	XP1000se/XIA30/XIA50,XIA100/XIA150
CD	C1	1	0	0	0	0	0	1	1	Input	XP1000se/XIA30tXIA50,XIA100/XIA150
Video	C8	0	0	0	1	0	0	1	1	Input	XIA100/XIA150
Phono/Option	C9	1	0	0	1	0	0	1	1	Input	XP1000se/XIA30/XIA50,XIA100/XIA150
Aux/OPT	CA	0	1	0	1	0	0	1	1	Input	XP1000se/XIA30/XIA50,XIA100/XIA150
iPod/DAC	CB	1	1	0	1	0	0	1	1	Input	XIA100/XIA150
Master Volume Up >	D8	0	0	0	1	1	0	1	1	General	XP1000se/XIA30/XIA50,XIA100/XIA150
Master Volume Dn <	D9	1	0	0	1	1	0	1	1	General	XP1000se/XIA30/XIA50,XIA100/XIA150

REMOTE CONTROL



RC-048a

1.INPUT SOURCES
PHONO, CD, TUNER, AUX

2.VOLUME CONTROL
△: VOLUME UP
▽: VOLUME DOWN

SPECIFICATIONS

Input Sensitivity for 1W/Rated Power into 8 ohms:

High level inputs	23mV/150mV
Phono input MM	0.5mV/2.7mV
MC	0.05mV/0.27mV

Input impedance:

High level inputs	20K ohms
Phono input MM/MC	47K ohms/100PF

Frequency response:

Tone bypass 20Hz-20KHz	+/-0.5dB
Normal 20Hz-20KHz	+/-1.0dB
High level inputs -3dB	10Hz/60KHz

Signal to noise ratio(ref.1W/8 ohms):

High level inputs "A" WTD	88dB
Phono inputs"A" WTD	80dB
Separation 20Hz-20KHz	>65dB

Tone control range:

Bass at 100Hz	+/-10dB
Treble at 10KHz	-8/+11dB
Overall feedback	26/29dB

PHYSICAL:

Dimensions (W x H x D)	430x82x288 mm
Net weight	3.0Kg
Shipping weight (4 pieces)	18.0Kg
Finish	black

Weltronics Corp. reserved the right to improve its products at any time. Specifications are subject to change without notice.

SAFETY INSTRUCTION

1. READ INSTRUCTIONS

All the safety and operating instructions should be read before the appliance is operated.

2. RETAIN INSTRUCTIONS

The safety and operating instructions should be retained for future reference.

3. HEED WARNINGS

All warnings on the appliance and in the operating instructions should be adhered to.

4. FOLLOW INSTRUCTIONS

All operating and use instructions should be followed.

5. WATER AND MOISTURE

The appliance should not be used near water - for example, near a bathtub, washbowl, kitchen sink, laundry tub, in a wet basement, or near a swimming pool, etc.

6. CARTS AND STANDS

The appliance should be used only with a cart or stand that is recommended by the manufacturer.

6A. An appliance and cart combination should be moved with care. Quick stops, excessive force, and uneven surfaces may cause the appliance and cart combination to overturn.



7. WALL OR CEILING MOUNTING

This equipment is not designed for use mounted on a wall or a ceiling.

8. VENTILATION

The appliance should be situated so that its location or position does not interfere with its proper ventilation. For example, the appliance should not be situated on a bed, sofa, rug, or similar surface that may block the ventilation openings, or placed in a built-in installation, such as bookcase or cabinet that may impede the flow of air through the ventilation openings.

9. HEAT

The appliance should be situated away from heat sources such as radiators, heat registers, stoves, or other appliances (including amplifiers) that produce heat.

10. POWER SOURCES

The appliance should be connected to a power supply only of the type described in the operating instructions or as marked on the appliance.

11. POWER-CORD PROTECTION

Power-supply cords should be routed so that they are not likely to be walked on or pinched by items placed upon or against them, paying particular attention to cords at plugs, convenience receptacles, and the point where they exit from the appliance.

12. CLEANING

The appliance should be cleaned only as recommended by the manufacturer.

13. NON USE PERIODS

The power cord of the appliance should be unplugged from the outlet when left unused for a long period of time.

14. OBJECT AND LIQUID ENTRY

Care should be taken so that objects do not fall and liquids are not spilled into the enclosure through openings.

15. SERVICING

The user should not attempt to service the appliance beyond that described in the operating instructions. All other servicing should be referred to qualified service personnel.

16. DAMAGE REQUIRING SERVICE

The appliance should be serviced by qualified service personnel when:

- a) The power-supply cord or the plug has been damaged; or
- b) Objects have fallen, or liquid has been spilled into the appliance; or
- c) The appliance has been exposed to rain; or
- d) The appliance does not appear to operate normally or exhibits a marked change in performance; or
- e) The appliance has been dropped, or the enclosure is damaged.

17. POWER LINES

(APPLIES TO TUNER AND RECEIVERS ONLY)

An outdoor antenna should be located away from power lines.

18. OUTDOOR ANTENNA GROUNDING

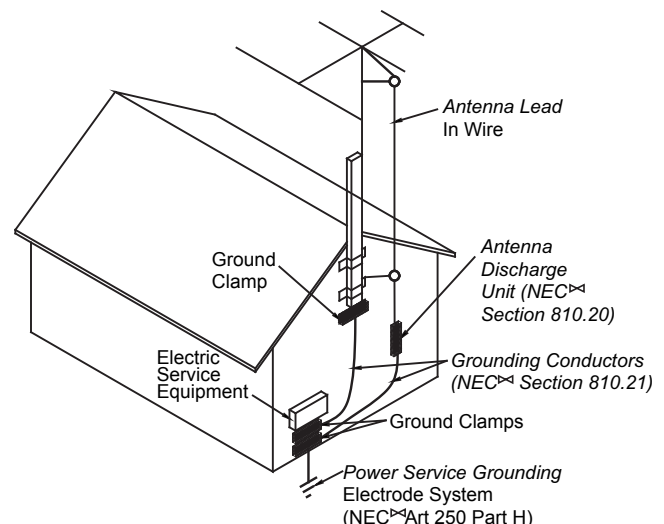
(APPLIES TO TUNER AND RECEIVERS ONLY)

If an outside antenna is connected to the receiver, be sure the antenna system is grounded so as to provide some protection against voltage surges and built up static charges.

Section 810 of the National Electrical Code, ANSI/NFPA No. 70-1984, provides information with respect to proper grounding of the mast and supporting structure, grounding of the lead-in wire to an antenna discharge unit, size of grounding conductors, location of antenna-discharge unit, connection to grounding electrodes, and requirements for the grounding electrode. See Figure.

- a) Use No. 10 AWG (5.3 mm²) copper, No. 8 AWG (8.4 mm²) aluminum, No. 17 AWG (1.0 mm²) copper-clad steel or bronze wire, or larger, as a ground wire.
- b) Secure antenna lead-in and ground wires to house with stand-off insulators spaced from 4-6 feet (1.22-1.83 m) apart.
- c) Mount antenna discharge unit as close as possible to where lead-in enters house.
- d) Use jumper wire not smaller than No. 6 AWG (13.3 mm²) copper, or the equivalent, when a separate antenna-grounding electrode is used. See NEC Section 810-21(j).

Antenna Grounding According to the National Electrical Code



† National Electrical Code
Available from Library, book
stores, or National Fire Protection
Association (Batterymarch Park,
Quincy, MA 02269).



WELTRONICS CORP.
LONDON/L.A.

AMC Web: <http://www.amchome.com>

PN: 21R-4295_v109